

As individual as you are.



CeTePox[®] 1393-05 H

(cycloaliphatic polyamine - salicylic acid free)

As individual as you are.



Hardener-Properties

Name Hardener CeTePox[®]	CeTePox[®] 1393-08 NF H	CeTePox[®] 1393-05 H
HAEW [g/eq]	93	93
Refractive Index @ 20°C	1,5441	1,5356
Density [g/cm ³ @ 23°C]	1,042	1,033
Amine Value [mg KOH / g]	316	314
Viscosity [mPa*s @ 25°C]	273	318
Gardner Colour	0,7	0,9

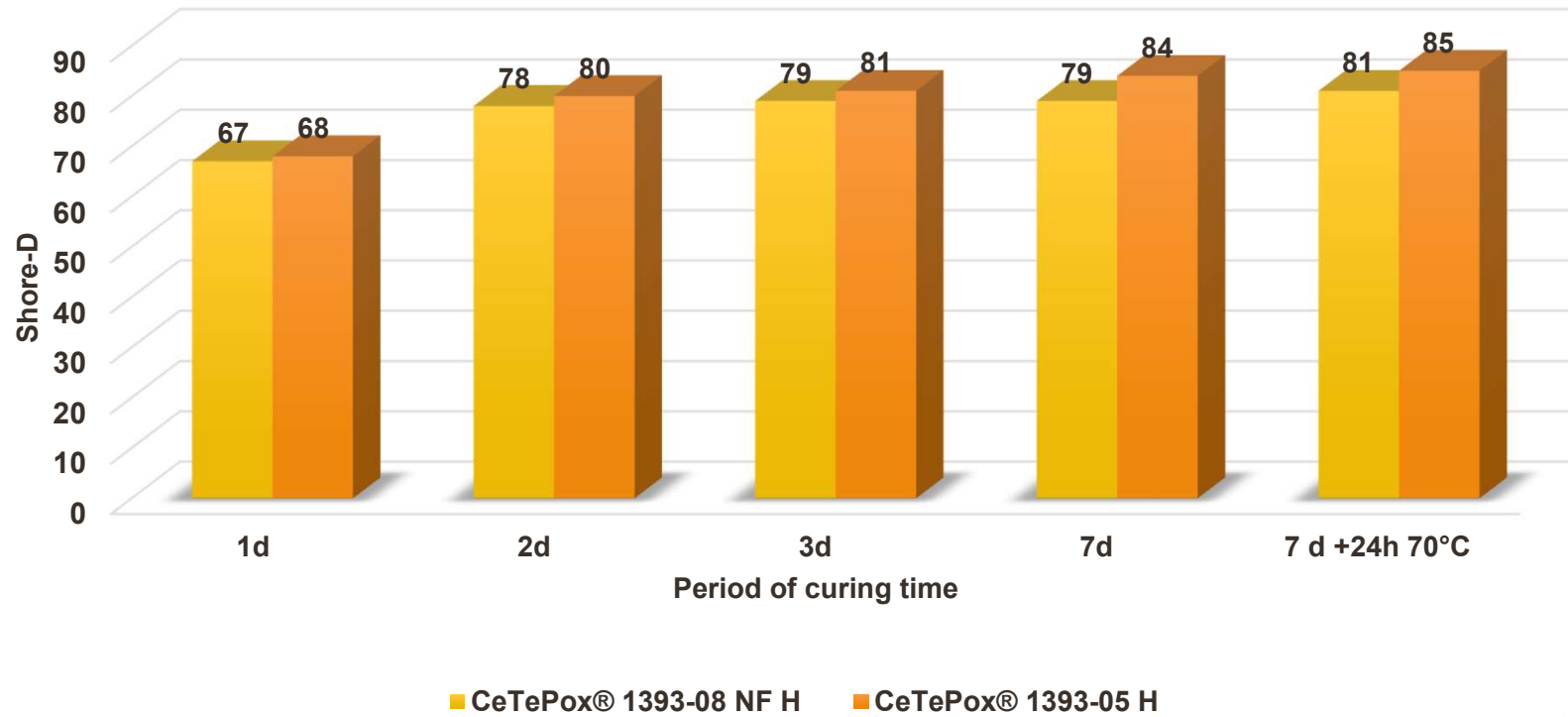
System-Properties

Name Resin CeTePox [®]	CeTePox [®] 245 R	CeTePox [®] 245 R
Name Hardener CeTePox [®]	CeTePox [®] 1393-08 NF H	CeTePox [®] 1393-05 H
Mixing Ratio Resin : Hardener (parts by weight)	100 / 50	100 / 50
Viscosity of Mixture [mPa*s bei 25 °C]	550	560
Pot-Life 100 g, 23 °C → 40 °C [min]	14	19
Recommended Minimum Curing Temperature [°C]	8	8
Shore-D-Hardness, after 1 d curing @ 23°C	67	68
Surface Quality, curing @ r.t. [0 = excellent to 5 = reduced]	1	1
Resistance to water-spotting, after 1 d @ r.t. [0 = no change to 5 = bad]	1	1
Glass Transition Temperature, appr. [°C]	44	45

As individual as you are.



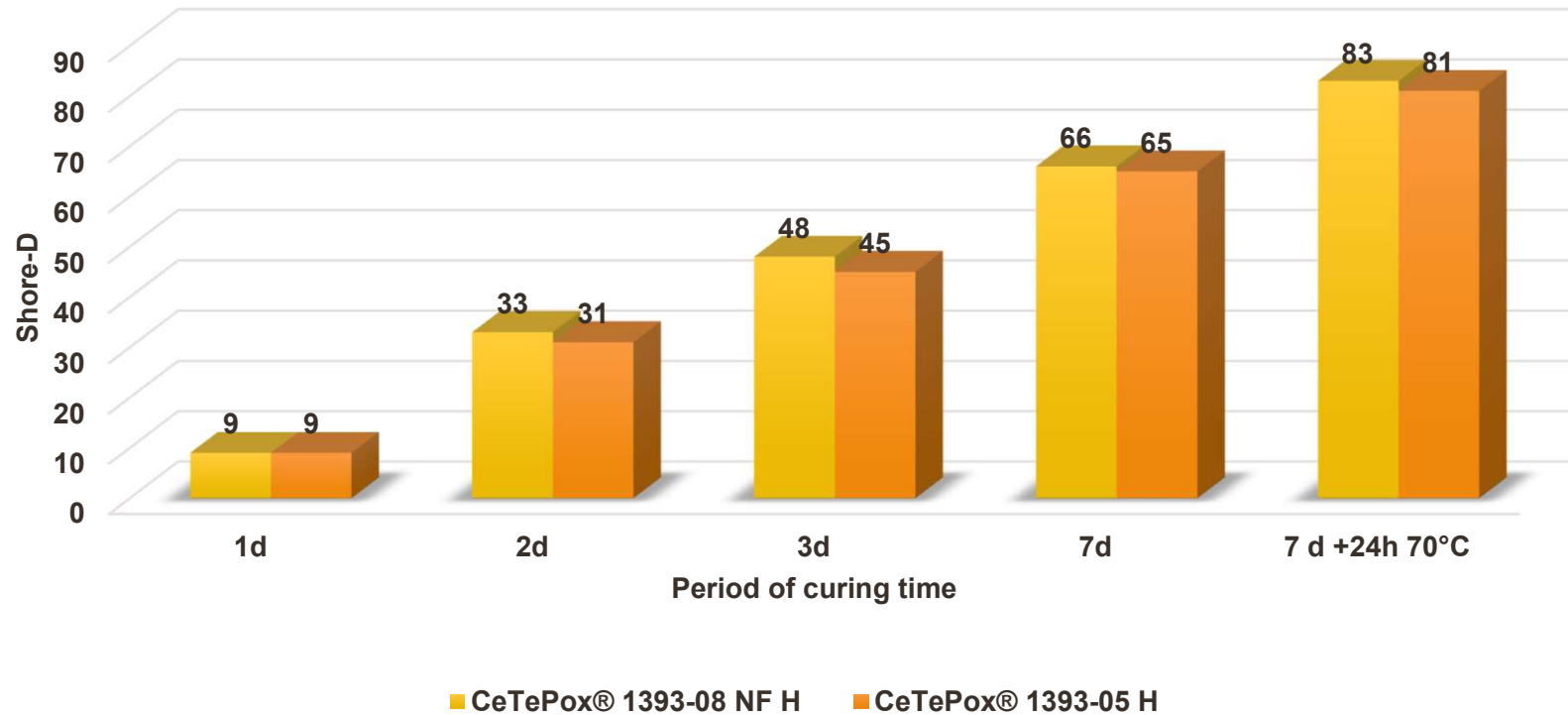
Shore-D Hardness @ 23°C



As individual as you are.



Shore-D Hardness @ 8°C



As individual as you are.

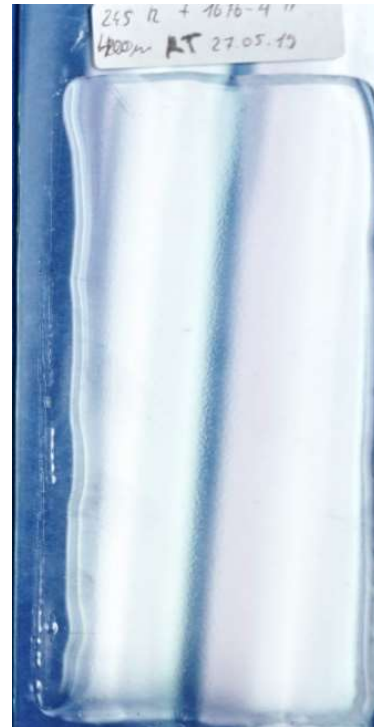


**Film Appearance, 400 μ m Draw Down On Glass,
After 1 d @ 23°C**

**CeTePox® 245 R
CeTePox® 1393-08 NF H**



**CeTePox® 245 R
CeTePox® 1393-05 H**

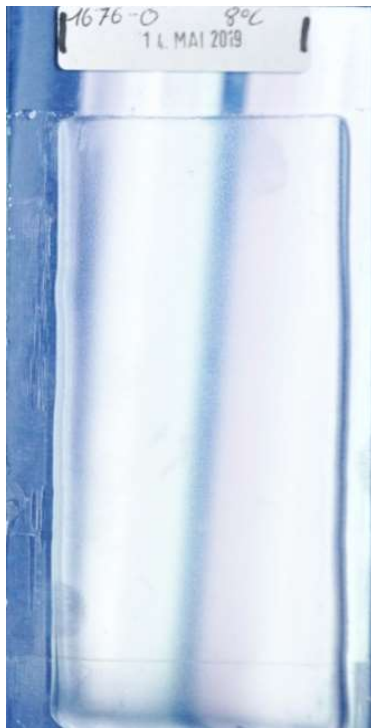


As individual as you are.

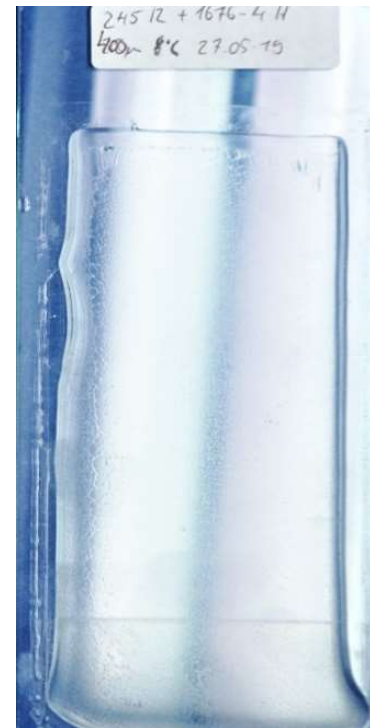


**Film Appearance, 400 μ m Draw Down On Glass,
After 1 d @ 8°C**

CeTePox® 245 R
CeTePox® 1393-08 NF H



CeTePox® 245 R
CeTePox® 1393-05 H



As individual as you are.



**Appearance Of 3mm Film in Self-levelling Guide
Formulation @ 23°C**

CeTePox® 245 R
CeTePox® 1393-08 NF H



CeTePox® 245 R
CeTePox® 1393-05 H

