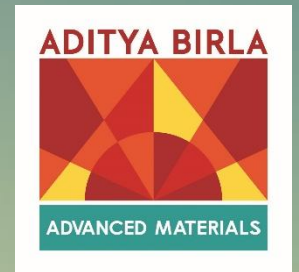


2025



Sustainability Report

following the voluntary SME ESRS



CTP Advanced Materials GmbH

Message from the CEO

Dear Partners,

The Advanced Materials Business is an integral part of the Aditya Birla Group and is guided by our Group Purpose: "To enrich lives by building dynamic and responsible businesses and institutions that inspire trust"

The customers we serve across the globe are at the cutting edge of technology, demonstrate high level of Environmental Stewardship, Corporate Governance and Social Impact. Our manufacturing plants in Thailand, India and Germany have consistently achieved silver medals from EcoVadis and our manufacturing site in India has also been conferred the RC Logo for the period 2025 to 2028

We are committed to working with our stakeholders to integrate sustainability into core operations. As a Business, our sustainability efforts are anchored around

- a. Ensuring Zero Harm as a top priority. We proactively manage Serious Injuries and Fatalities and mitigate risks by adopting TapRoot's Root Cause Analysis framework.
- b. Achieving our Decarbonisation targets to meet our Net Zero Goal by 2050
- c. Ensuring No Net Loss of Biodiversity by adopting and reporting as per the TNPD Framework
- d. Ensuring Water Resilience by targeting a 50% reduction in freshwater withdrawal intensity
- e. Embedding Waste to Wealth for Circularity by recycling waste and offering recyclability solutions to the industry through our patented Recyclamine[®] technology
- f. Implementing a Supply Chain Code of Conduct to endorse our commitment to transparency and ethical practices
- g. Empowering Communities through our CSR efforts making a significant impact in healthcare, education and other sectors

The CTP Advanced Materials Sustainability Report is a small step to communicate our commitment to environmental, social and governance areas. I would request you to kindly read the report and provide your valuable feed-back.

Rajesh Balakrishnan

Chief Executive Officer (CEO), Advanced Materials Business, Aditya Birla Group

Table of Contents

INTRODUCTION	3
MATERIALITY ANALYSIS	4
BASIC MODULE	5
B1 – BASIS FOR PREPARATION	5
B2 – PRACTICES, POLICIES AND FUTURE INITIATIVES FOR TRANSITIONING TOWARDS A MORE SUSTAINABLE ECONOMY	6
B3 – ENERGY AND GREENHOUSE GAS EMISSIONS	7
B4 – POLLUTION OF AIR, WATER AND SOIL	8
B5 – BIODIVERSITY	8
B6 – WATER	9
B7 – RESOURCE USE, CIRCULAR ECONOMY AND WASTE MANAGEMENT	9
B8 – WORKFORCE – GENERAL CHARACTERISTICS	11
B9 – WORKFORCE – HEALTH AND SAFETY	11
B10 – WORKFORCE – REMUNERATION, COLLECTIVE BARGAINING AND TRAINING	12
B11 – CONVICTIONS AND FINES FOR CORRUPTION AND BRIBERY	12
COMPREHENSIVE MODULE	13
C1 – STRATEGY: BUSINESS MODEL AND SUSTAINABILITY – RELATED INITIATIVES	13
C2 – DESCRIPTION OF PRACTICES, POLICIES AND FUTURE INITIATIVES FOR TRANSITIONING TOWARDS A MORE SUSTAINABLE ECONOMY	14
C3 – GHG REDUCTION TARGETS AND CLIMATE TRANSITION	16
C5 – ADDITIONAL (GENERAL) WORKFORCE CHARACTERISTICS	18
C6 – ADDITIONAL OWN WORKFORCE INFORMATION - HUMAN RIGHTS POLICIES AND PROCESSES	18
C7 – SEVERE NEGATIVE HUMAN RIGHTS INCIDENTS	19
DISCLAIMER	20

Introduction

With this sustainability report for fiscal year 2025 (April 2024 – March 2025), we aim to transparently communicate how CTP Advanced Materials takes responsibility for environmental, social, and governance topics. This report follows the Voluntary Small and Medium Enterprise ESRS, published by EFRAG in December 2024. It aims to facilitate sustainability reporting for micro, small, and medium enterprises in the European Union. Furthermore, it provides key metrics that may be relevant to stakeholders and business partners.

CTP Advanced Materials is part of the Aditya Birla Advanced Materials Business, a global division of the Aditya Birla Group—one of the world’s leading industrial conglomerates. The Advanced Materials Business is amongst the top five epoxy players globally, with manufacturing sites in Germany, United States of America, Thailand, and India. It offers a broad and evolving portfolio of epoxy resins, curing agents, reactive diluents, and system solutions for industries such as construction, coatings, composites, electronics, adhesives, and specialized sectors like wind energy, aerospace, automotive, and marine.

Originating in Rüsselsheim, Germany in 1993, CTP has developed into a leading European supplier of specialty epoxy systems and curing agents. With a strong application knowledge base and a customer-centric approach, the company serves the industries under the well-established CeTePox brand. Since joining the Aditya Birla Group in 2013, CTP has contributed significantly to the group’s innovation and sustainability efforts in the advanced materials space.

Our sustainability strategy is aligned with both the expectations of our customers and the overarching goals of the Aditya Birla Advanced Materials Business—particularly in the areas of CO₂ reduction, innovation, responsible sourcing, and social responsibility. Sustainability is embedded in our culture and guides our operations, policies, and partnerships as we strive to be future-ready.

Materiality Analysis

As part of our sustainability strategy, CTP Advanced Materials conducted a double materiality assessment in early 2025. The analysis was based on the European Sustainability Reporting Standards (ESRS) and evaluated both impact materiality (effects on environment and society) and financial materiality (risks and opportunities for the company).

The process involved identifying relevant sustainability topics across environmental, social, and governance dimensions, followed by a structured evaluation of their significance to CTP. Each topic was assessed using defined criteria and plotted on a materiality matrix. Topics exceeding the threshold value of 2.9 in either dimension were considered material.

The following topics emerged as most material for CTP:

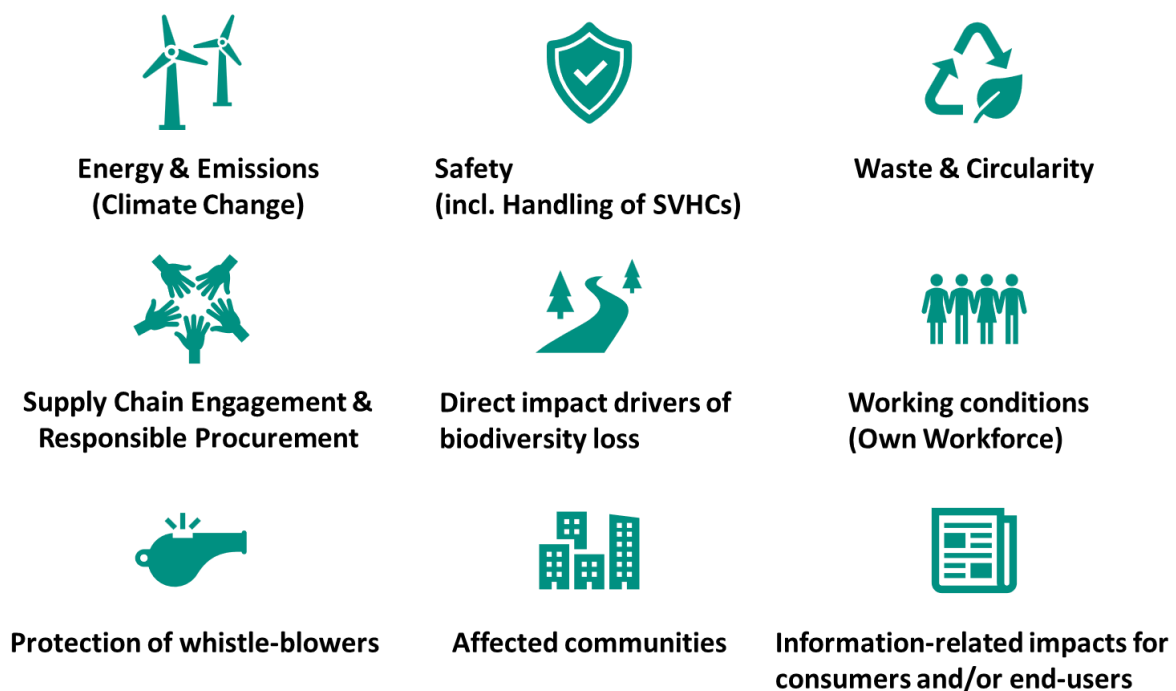


Figure 1: Material Topics for CTP

These topics reflect our strategic priorities and stakeholder expectations. They guide our sustainability actions and reporting focus.

Basic Module

B1 – Basis for preparation

This sustainability report includes Basic Module and Comprehensive Module and was prepared on an individual basis.

Table 1: General information about the undertaking

	Disclosure
Undertaking's legal form	GmbH
NACE sector classification code(s)	20.59 – Manufacture of other chemical products n.e.c. (not elsewhere classified)
Size of the balance sheet (in Euro)	38.397.216,88
Turnover (in Euro)	69.888.643,77
Number of employees	78

Table 2: Country of primary operations and sites

Sites	Address	Postal Code	City	Country	Coordinates (geolocation)
CTP Advanced Materials GmbH	Stahlstraße 60	65428	Rüsselsheim	Germany	49.97595459095324, 8.42365136570148

CTP Advanced Materials GmbH holds an ISO 14001 certification, valid from 16 April 2024 to 18 February 2027, confirming the implementation of a structured environmental management system.

Additionally, the company received a Silver Medal from EcoVadis in September 2024 with a score of 68/100, placing it among the top 12% of all rated companies in its sector. The EcoVadis assessment covers key areas such as environment, labor & human rights, ethics, and sustainable procurement.

B2 – Practices, policies and future initiatives for transitioning towards a more sustainable economy

Table 3: Practices, policies and future initiatives for transitioning towards a more sustainable economy

	Do you have existing sustainability practices/ policies/ future initiatives that address any of the following sustainability issues?	Are they publicly available?	Do the policies have any targets?
Climate Change	Yes	Yes	Yes
Pollution	Yes	Yes	Yes
Water and Marine Resources	Yes	Yes	Yes
Biodiversity and Ecosystems	Yes	Yes	Yes
Circular Economy	Yes	Yes	Yes
Own Workforce	Yes	Yes	Yes
Workers in the Value Chain	Yes	Yes	Yes
Affected Communities	No		
Consumers and end-users	Yes	Yes	Yes
Business Conduct	Yes	Yes	Yes

CTP Advanced Materials GmbH addresses key sustainability topics across environmental, social, and ethical dimensions. The company uses 100% renewable energy and actively reduces emissions to combat climate change, while also preventing pollution through responsible chemical management. Efforts to conserve water resources and to promote a circular economy include reducing water use and developing recyclable resin systems.

Social responsibility is reflected in fair working conditions for the own workforce and ethical practices in the supply chain. The company also prioritizes product safety for consumers and end-users and upholds strong business conduct through certifications and sustainability ratings.

B3 – Energy and greenhouse gas emissions

Table 4: Energy consumption in FY2025

	Renewable (MWh)	Non-renewable (MWh)	Total (MWh)
Electricity	349	15	364
Fuels	0	899	899
Total	349	914	1263

Table 5: Greenhouse Gas Emissions in FY2025

	GHG emissions (t CO ₂ e)
Scope 1	193,9
Scope 2 - location-based	5,59
Scope 2 - market-based	0
Total	199,5

Table 6: Scope 3 Emissions in FY2025

	Emissions (t CO ₂ e)
Total Scope 3	153065
3.1 Purchased goods and services	151795
3.2 Capital goods	701
3.4 Upstream transportation and distribution	268
3.5 Waste generated in operations	29
3.6 Business travel	71
3.7 Employee commuting	132
3.9 Transportation and distribution of sold products	69

In line with the VSME Standard (Module B3), we have assessed the relevance of Scope 3 categories based on materiality and sector-specific impact. The following categories have been excluded from our current Scope 3 emissions reporting due to low relevance, lack of operational control, or insufficient data availability: Fuel- and energy-related activities, Upstream leased

assets, Processing of sold products, Use of sold products, End-of-life treatment of sold products, Downstream leased assets, Franchises, Investments

In the reporting year, our company generated 199.6 tons of CO₂-equivalent emissions (Scope 1 and market-based Scope 2) against a turnover of €69,888,643.77, resulting in a GHG intensity of 2.77 t CO₂e per million EUR.

B4 – Pollution of air, water and soil

CTP Advanced Materials GmbH is not subject to legal or voluntary reporting obligations regarding pollutant emissions to air, water, or soil under EMAS or other environmental regulations. Therefore, this disclosure is not applicable.

B5 – Biodiversity

Table 7: Number and area of sites located in/near biodiversity sensitive areas

Location	Area (hectares)	Biodiversity sensitive area	Specification (located in/near biodiversity sensitive areas)
CTP Advanced Materials	0.75	0	

Table 8: Land use metrics

Land-use type	Area (hectares or m2) previous year	Area (hectares or m2) reporting year	% change
Total sealed area	5168,75 m ²	5168,75 m ²	0
Total nature-oriented area on-site	2377,25 m ²	2377,25 m ²	0
Total nature-oriented area off-site	0	0	0
Total use of land	7546 m ²	7546 m ²	0

CTP Advanced Materials GmbH does not operate in or near any officially designated biodiversity-sensitive areas. The company's production site is located in an industrial zone with no direct impact on protected habitats or endangered species. Nevertheless, CTP remains committed to minimizing its environmental footprint and monitors its operations to avoid any indirect effects on surrounding ecosystems.

Partially sealed surfaces, such as gravel (split) or eco-paving systems, are included under the category of sealed area in our land use disclosure. Although these surfaces may allow limited water infiltration, they do not primarily serve to preserve or enhance biodiversity. Therefore, in alignment with the VSME ESRS B5 guidance, they are treated as sealed due to their functional characteristics and limited ecological value.

B6 – Water

CTP Advanced Materials GmbH does not use water in its production processes. Water consumption is limited to sanitary facilities (such as toilets and showers), small-scale laboratory activities, and a closed-loop cooling cycle in production. In FY2025, total water withdrawal across all buildings amounted to 624 m³, with no water consumption recorded, as water is not removed from the system. According to the Aqueduct Water Risk Atlas, the site of CTP Advanced Materials GmbH is located in an area classified as having a low to medium water risk. This means that while water availability and quality are generally stable, there may be occasional or localized challenges such as seasonal variability, moderate competition for water resources, or minor regulatory pressures. Currently, the site does not experience any significant water stress or supply issues.

B7 – Resource use, circular economy and waste management

CTP Advanced Materials GmbH applies circular economy principles across its operations, guided by the Aditya Birla Group's environmental values and internal waste management practices. Our approach includes:

- **Waste Hierarchy Implementation:** We rigorously apply the waste hierarchy—prevent, reduce, reuse, recycle, recover—as outlined in our Waste Management Plan. This includes minimizing production waste, reprocessing off-spec materials, and separating hazardous from non-hazardous waste to reduce environmental impact.
- **Reuse and Recycling:**
 - Empty IBCs are cleaned and reused in collaboration with service providers.

- Metal drums are compressed and sent for recycling.
- Paper, plastic, and organic waste are collected separately and treated through municipal recycling or composting systems.
- Customers are encouraged to return used packaging for reuse or recycling.
- **Product Stewardship:** We are developing recyclable epoxy systems (e.g. using Recyclamine®) and exploring low-carbon product innovations to extend material life cycles and reduce environmental impact.
- **Resource Efficiency:** We aim to reduce water and energy consumption, reuse materials where feasible, and avoid unnecessary packaging. Contaminated water and solvents are managed responsibly and sent for energy recovery when recycling is not possible.
- **Continuous Improvement:** Waste management options are regularly reviewed to incorporate new technologies and improve environmental outcomes. We maintain detailed inventories and collaborate with certified disposal partners.

These practices reflect our commitment to embedding circularity into our operations and value chain, in line with international standards and stakeholder expectations.

Table 9: Waste amounts

	Total waste generated, of which:	Waste diverted to recycle or reuse	Waste diverted to disposal
Non-hazardous Waste	33.4 t	10 t	23.4 t
Hazardous Waste	19.2 t	0	19.2 t

In the reporting period from April 1, 2024 to March 30, 2025, our company operated in a sector with significant material flows, primarily involving chemical inputs and packaging materials. To ensure transparency and support future resource efficiency, we disclose the annual mass-flow of these materials.

Based on procurement data, we used a total of 18,892,484.86 kg of chemicals, including epoxy resins, amines, alcohols, and other specialty substances essential for our operations. Additionally, we purchased 17,959 packaging units (e.g. IBCs and drums) for storage and transport purposes.

This categorization reflects our main material dependencies and supports our efforts to monitor and optimize material use in line with environmental stewardship goals.

B8 – Workforce – General characteristics

Table 10: Employees by type of employment contract

Type of Contract	Number of employees (headcount)
Temporary contract	0
Permanent contract	77
Total employees	77

Table 11: Employees by gender

Gender	Number of employees (headcount)
Male	46
Female	31
Other	0
Not reported	0
Total employees	77

B9 – Workforce – Health and safety

Table 12: Metrics on Workforce Health and Safety

	Disclosure
Number of recordable work-related accidents	1
Rate of recordable work-related accidents	1.45
Number of fatalities as a result of work-related injuries and work-related ill health	0

In the reporting year FY2025, one recordable work-related accident occurred, with a total of 137,952 hours worked across the workforce. This corresponds to an accident rate of 1.45 per 100 full-time employees, calculated in line with the VSME framework. The low rate reflects the company's ongoing commitment to maintaining a safe and healthy working environment.

B10 – Workforce – Remuneration, collective bargaining, and training

All employees receive remuneration that is equal to or above the applicable national minimum wage. While the company is not formally bound by the chemical industry collective agreement, it voluntarily aligns its compensation practices with its provisions. This approach ensures fair and sector-appropriate pay and reflects the company's commitment to responsible employment standards.

CTP Advanced Materials has fewer than 150 employees and no collective bargaining agreement in place. Therefore, disclosures on gender pay gap and collective bargaining coverage are not required under the VSME standard.

Table 13: Average number of annual training hours per employee

	Average hours
Total	8
Female	10,2
Male	6,6
Diverse	

B11 – Convictions and fines for corruption and bribery

In the reporting year FY 2025, the company recorded **no convictions** and incurred **no fines** related to violations of anti-corruption or anti-bribery laws. This reflects the company's strong commitment to ethical business conduct and compliance with applicable legal standards.

Comprehensive Module

C1 – Strategy: Business model and Sustainability – Related Initiatives

Sustainability Statement: Business Model and Strategy

CTP Advanced Materials GmbH, based in Rüsselsheim, Germany, is a European hub for Aditya Birla Chemicals' epoxy business. We specialize in high-performance epoxy resin and hardener systems for industrial applications, supported by global collaboration and a strong commitment to sustainability. Our strategy combines innovation, customer proximity, and ESG-driven growth, aligned with the group-wide purpose of "Chemistry for a Greener World."

a) Key Products and Services

CTP Advanced Materials GmbH develops and manufactures epoxy resins and hardeners tailored for demanding applications, including wind energy, automotive lightweighting, and industrial coatings. Our offerings are supported by custom formulation services and application development support, ensuring compliance with industry standards and customer-specific performance needs.

b) Principal Markets

Operating under a B2B model, our German operations primarily serve industrial customers across Europe, with a focus on Germany, Austria, Switzerland, and neighboring regions. Our clients include automotive suppliers, construction material producers, and electrical component manufacturers.

c) Core Business Relationships

We maintain strategic relationships with:

- European raw material suppliers to ensure quality and supply chain resilience
- Industrial customers seeking high-performance, sustainable resin systems
- Research and innovation partners, including universities and industry consortia

- Sister sites in India and Thailand and United States of America, enabling global product harmonization and innovation

d) Key Strategic Elements Related to Sustainability

CTP Advanced Materials GmbH integrates sustainability into its core strategy through clear environmental, social, and governance (ESG) objectives. Key elements include:

- **Environmental Responsibility:** Targets include a 38% reduction in Scope 1 and 2 greenhouse gas emissions, 10% reduction in water use, elimination of hazardous waste to landfill, and full carbon footprint assessments for requested products by 2030.
- **Occupational Health & Safety:** The company aims for zero severe incidents, unsafe acts, and unsafe conditions through proactive safety management, training, and preventive maintenance.
- **Employee Development & Ethics:** All employees receive annual safety training. Employee satisfaction is monitored annually.
- **Responsible Supply Chain:** All suppliers are required to adhere to a Code of Conduct prohibiting child labor, forced labor, and corruption. ESG criteria are integrated into supplier evaluations and procurement training.

C2 – Description of practices, policies and future initiatives for transitioning towards a more sustainable economy

CTP Advanced Materials GmbH has implemented a comprehensive set of policies and initiatives to support its transition to a more sustainable economy. These are aligned with the Aditya Birla Group's sustainability framework and reflect our commitment to environmental stewardship, social responsibility, health and safety, and ethical governance.

Environmental Stewardship

- We aim to reduce Scope 1 and 2 greenhouse gas emissions by 38% by FY2030 (baseline FY2022).
- We procure certified green electricity and biogas, resulting in near-zero market-based Scope 2 emissions.
- We follow the waste hierarchy and maintain zero hazardous waste to landfill.
- We target a 10% reduction in total water consumption by FY2030 (baseline FY2024).
- We are committed to 100% substitution of all CMR substances.
- We promote circular economy principles and develop sustainable products with lower carbon footprints.

Social Responsibility

- We prohibit child labor, forced labor, discrimination, and harassment.
- By 2026, 100% of suppliers must comply with the supplier Code of Conduct.
- We conduct annual employee satisfaction surveys and promote mental health and well-being.
- All employees receive annual safety and functional training relevant to their roles.

Health & Safety

- We are working towards ISO 45001 certification.
- We aim for zero Category 4 & 5 incidents and zero unsafe acts and conditions.
- We conduct regular safety walks, audits, and ensure 100% completion of preventive maintenance tasks.

Quality & Product Stewardship

- We implement ISO 9001 and ISO 14001 standards across production and quality assurance.
- We support the development of recyclable and bio-based materials.
- We ensure product stewardship across the full lifecycle of our products.

Governance & Ethics

- We enforce a zero-tolerance policy on bribery and corruption, in line with German law.
- By 2030, 100% of employees will be trained on compliance topics including conflict of interest, fraud, and anti-competitive practices.
- We maintain a whistleblower system and aim for 100% employee awareness by 2026.

Accountability

Implementation is overseen by senior leadership, with department heads accountable for integrating sustainability practices into their operations. All employees are expected to contribute through their actions and decisions.

C3 – GHG reduction targets and climate transition

CTP Advanced Materials GmbH has defined clear climate targets as part of its broader sustainability strategy. Scope 1 emissions primarily stem from natural gas combustion for heating and process energy, as well as fuel consumption from company vehicles. Scope 2 emissions are limited to purchased electricity used for charging electric vehicles, as the site has been powered by 100% renewable electricity since March 2022. The reduction targets reflect the company's commitment to operational decarbonization and are aligned with group-wide climate goals. The following table summarizes the base year, target year, and emission reduction objectives for Scope 1 and Scope 2.

Table 14: GHG reduction targets

	Base year	Base year value	Target year	Target year value	Unit	Share that the target concerns
Scope 1	FY2022	246366	FY2030	172456	kg CO2	100 %
Scope 2	FY2022	44924	FY2030	8144	kg CO2	100 %
Total	FY2022	291290	FY2030	180600	kg CO2	100 %

CTP Advanced Materials GmbH plans to implement the following key actions to achieve its greenhouse gas reduction targets:

- **Procurement of Renewable Energy**

Continued sourcing of 100% renewable electricity for the Rüsselsheim site to maintain low Scope 2 emissions.

- **Electrification of Company Vehicles**

Gradual replacement of fossil-fuel-powered vehicles with electric and hybrid alternatives to reduce Scope 1 emissions.

- **Energy Efficiency Improvements**

Integration of energy-efficient equipment and systems, including regular maintenance and upgrades of infrastructure (e.g. heating systems, compressors, lighting).

- **Operational Eco-efficiency**

Promotion of energy-saving practices and automation (e.g. timers, smart controls) to reduce unnecessary energy use.

- **Process Optimization**

Evaluation of technically and financially feasible options to reduce emissions in production and R&D processes.

- **Climate-Conscious Product Development**

Development of low-carbon and recyclable materials to reduce indirect emissions and improve product stewardship.

C5 – Additional (general) workforce characteristics

The management team consisted of 2 female and 5 male department heads, resulting in a 2:5 female-to-male ratio. The company recognizes the importance of gender diversity in leadership and is committed to fostering inclusive development opportunities.

C6 – Additional own workforce information - Human rights policies and processes

We have established a Code of Conduct or a Human Rights Policy for the own workforce.

Table 15: Contents of the code of conduct / human rights policy

	Covered
Child labor	Yes
Forced labor	Yes
Human trafficking	No
Discrimination	Yes
Accident prevention	Yes
Other	Yes

The Compliance Codex includes the following additional topics:

- Freedom of association – acknowledged as a principle.
- Harassment and bullying prevention – all forms strictly prohibited.
- Fair working conditions – includes working schedules, adequate payment, paid leaves, and proportional disciplinary measures.
- Environmental responsibility – includes resource conservation, waste management, and protection of the environment.
- Data protection and privacy – GDPR compliance and confidentiality of personal and business data.

- Anti-corruption and anti-bribery – clear rules on gifts, invitations, and prohibition of bribery and money laundering.
- Product safety and emergency preparedness – includes safety information and support for clients during incidents.

Complaints-handling mechanism for our own workforce

CTP Advanced Materials GmbH has established a confidential and secure whistleblower system for its workforce, operated by an external service provider. This mechanism allows employees to report concerns related to legal or internal policy violations, either anonymously or with contact details, via a dedicated online portal. All reports are handled in accordance with the Whistleblower Protection Act (HinSchG), ensuring protection against retaliation and compliance with data protection and documentation requirements.

C7 – Severe negative human rights incidents

Incidents in own workforce

Table 16: Incidents in own workforce

Severe negative human rights incidents	Confirmed incidents
Child labor	No
Forced labor	No
Human trafficking	No

Incidents involving workers in the value chain, affected communities, consumers and end-users

CTP Advanced Materials GmbH confirms that there have been no severe negative human rights incidents involving workers in the value chain, affected communities, consumers, or end-users.

Disclaimer

This report presents sustainability-related data and information as available and accurate at the time of publication. While CTP Advanced Materials GmbH does not plan to revise this report after release, some figures—particularly those based on estimates, assumptions, or third-party data—may be subject to future refinement as methodologies improve or more precise data becomes available. The report may also contain forward-looking statements, including sustainability targets and strategic goals, which are based on current expectations and assumptions. These are inherently subject to change due to external factors or internal developments. CTP Advanced Materials GmbH makes no warranties, express or implied, regarding the completeness or accuracy of the information in this report and accepts no liability for any decisions made based on its content.

Publication date: September 4, 2025